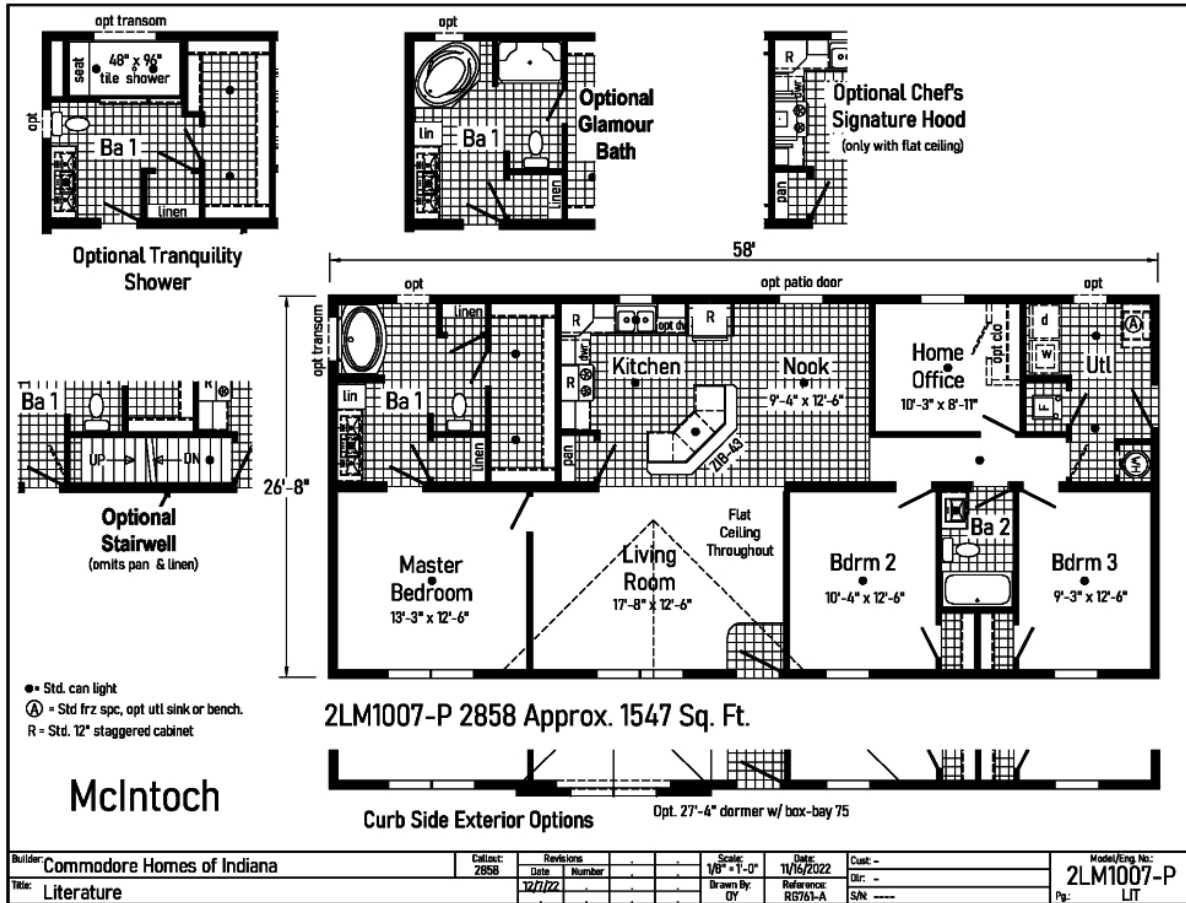


PRINTABLE INFO SHEET

Series: Landmark Ranch
 Model: 2LM1007P McIntoch



About This Model

Style: Ranch / Bedrooms: 3 / Bathrooms: 2 / Square Feet: 1547

CUSTOMER CONTACT

Notes: _____

PRINTABLE INFO SHEET

Series: Landmark Ranch
Model: 2LM1007P McIntoch



Standards & Features

Interior

Smooth Drywall Throughout
Flat Ceiling Throughout
Stipple Ceiling
Coveless Ceiling Joints
8' Sidewall Height
Brushed Nickel 5-Arm Dining Room Light
Recessed LED Lighting
Mortise Door Hinges
Metal Interior Passage Sets
Door Stops
2 1/4" Door & Window Casing
3" Baseboard Moulding
Smooth 6-Panel Doors
Smoke Detectors with Battery Back-Up
Wire Shelving in Guest Closet
Brushed Nickel Interior Hardware and Lighting

Exterior

Patina Coach Light at Front Door
Patina Coach Light at Rear Door
Two GFI-Protected Exterior Receptacle
Vinyl Dutch Lap Siding with Larger
Starter Strip to Cover Sill Plate
O.S.B. Sheathing
Fixed Roof with 10" Eaves (26'8" & 30')
16" Eaves (27'4")
Ridgevent Roof Ventilation System
3/0x6/8 6-Panel Fiberglass Front and Rear
Door with Deadbolt Lock
MI Vinyl Insulated Low-E Windows (Gridless)
Raised Panel Shutters on Front Door Side

Kitchen

Whirlpool Deluxe 30" Gas Free Standing
Range
Power Range Hood with Light
Whirlpool 18 Cubic Foot, No-Frost Refrigerator
w/ Icemaker
Stainless Steel Double Bowl Sink (33x22x8)
Tight Mesh Shelving in Pantry
One USB Receptacle

Baths

One Piece Fiberglass Tub/Showers
Garden Tub/Showers-Master Bathroom
Tub Overflows
Anti-Scald Valves on Showers & Tubs
1.6 Gallon Per Flush Elongated Toilets
China Stool, Tank, and Lid
China Sinks with Overflows and Pop-Up Drains
Lighted Vent Fan in Each Bath
2-Arm Infinity Bath Lights
Pencil Edge Mirrors

Cabinetry

Hardwood Stiles
3/4 Overlay Hardwood Mission Flat
Panel Cabinet Doors
Evermore Custom Cabinetry (KCMA Certified)
Crown Moulding on Overhead Cabinets
Transitional Cabinet Hardware
30"/42" Staggered Wall Overhead Cabinets
or 42" Overhead Cabinets
Lined Overhead Cabinets
Adjustable Shelves in Overhead Staggered Cabinets

CUSTOMER CONTACT

Notes:

PRINTABLE INFO SHEET

Series: Landmark Ranch
Model: 2LM1007P McIntoch



Standards & Features (continued)

Cabinetry (continued)

- Dovetail Drawer Construction
- 75#Drawer Guides
- Base and Center Shelf in Base Cabinets
- WilsonArt Laminate Countertops with Laminate Edging
- 4" WilsonArt Laminate Backsplash
- 36" High Vanities
- Base Shelf in Vanities
- Bump-out Staggered Wall Cabinet over Range
- Refrigerator Surround

Utilities

- 200 AMP Electrical Service
- Copper Wiring Throughout
- 95 Plus Efficient Gas Furnace
 - Perimeter Heat
 - Woodgrain Furnace Door
 - Fiberglass Heat Ducts
 - Air Return System
- Air Conditioning Thermostat with 5-Wires
- 40 Gallon Electric Water Heater with Pan
- Structured Flow Brushed Nickel Faucets
- Main Water Line Shut-Off Valve
- Water Shut-Off Valves - Where Accessible
- Plumb and Wire for Washer
- Wire and Vent for Dryer
- One Exterior Water Faucet
- Recessed Dryer Box (where applicable)

Insulation

- R-19 Fiberglass Insulation in Walls
- R-38 Avg. Blown Insulation in Ceiling

Flooring

- Choice of Various Styles of SHAW 15 oz. Carpet w/ ShawGuard Carpet Protector
- Rebond Carpet Pad with Tackstrip
- Carpet Installation
- No-Wax Vinyl Floor Coverings
- Entry Foyer Vinyl Flooring

Bedrooms

- Ceiling Lights
- Egress Window Each Bedroom
- Wire Shelving in Wardrobes
- 4" LED Light in All Walk-In Closets

Construction

- 2x10 Floor Joists 16" on Center**
- 2x6 Exterior Walls 16" on Center**
- 2x4 Interior Walls
- 40# Roof Load
- 32 wide Floor Stabilizer

CUSTOMER CONTACT

Notes:
