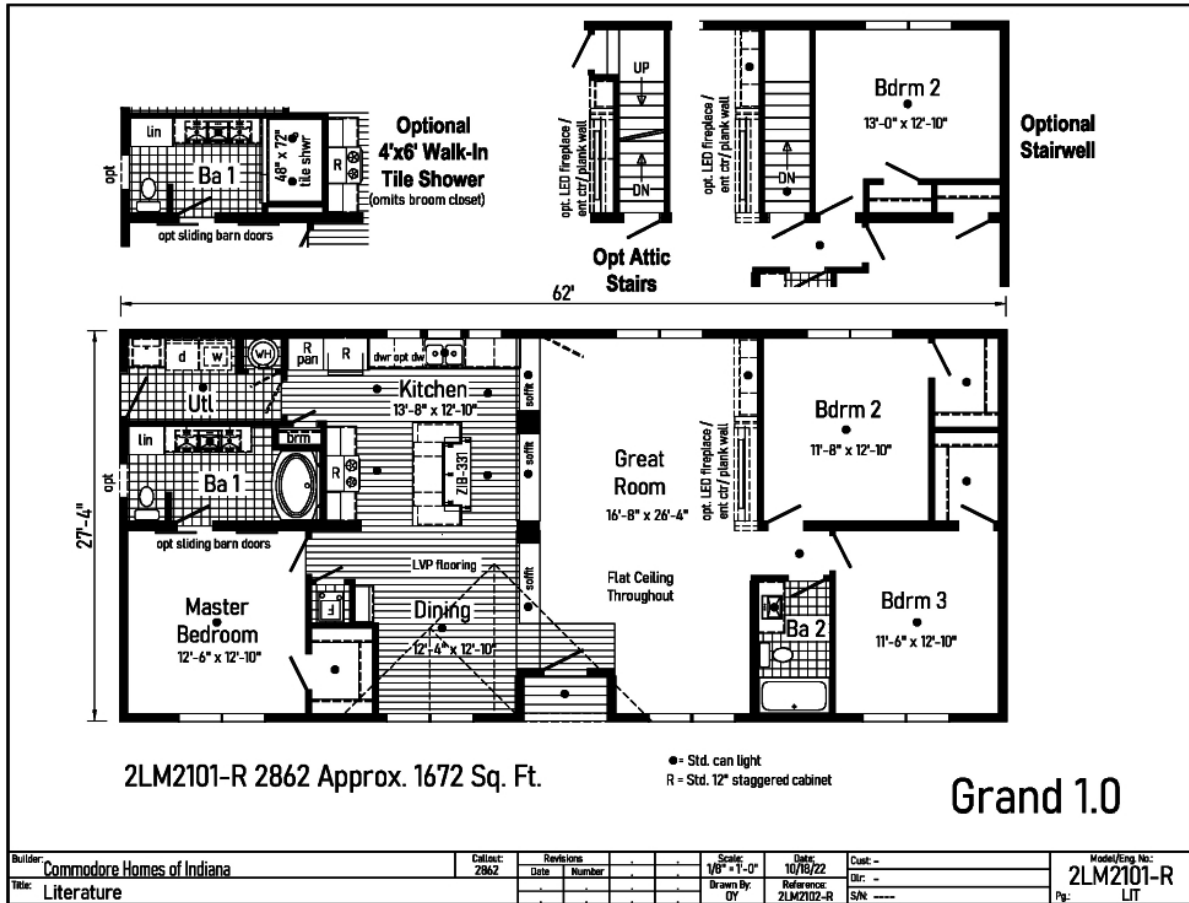


# PRINTABLE INFO SHEET

Series: Landmark Grand  
 Model: 2LM2101R Grand 1.0



## About This Model

Style: Ranch / Bedrooms: 3 / Bathrooms: 2 / Square Feet: 1672

## CUSTOMER CONTACT

Notes: \_\_\_\_\_

\_\_\_\_\_

\_\_\_\_\_

\_\_\_\_\_

# PRINTABLE INFO SHEET

**Series: Landmark Grand**  
**Model: 2LM2101R Grand 1.0**



## Standards & Features

### Interior

Smooth Drywall Throughout  
Flat Ceiling Throughout  
Stipple Ceiling  
Coveless Ceiling Joints  
8' Sidewall Height  
Recessed LED Lighting  
Mortise Door Hinges  
Metal Interior Passage Sets  
Door Stops  
White 2 1/4" Door & Window Casing  
White 3" Baseboard Moulding  
White 2-Panel Doors  
Smoke Detectors with Battery Back-Up  
Wire Shelving in Guest Closet  
Brushed Nickel Interior Hardware

### Exterior

Gatsby Light at Front Door  
Gatsby Light at Rear Door  
GFI-Protected Exterior Receptacles at Doors  
Vinyl Dutch Lap Siding with Larger  
Starter Strip to Cover Sill Plate  
O.S.B. Sheathing  
Fixed Roof with 10" Eaves (26'8" & 30')  
16" Eaves (27'4")  
Architectural Shingles  
Ridgevent Roof Ventilation System  
3/0x6/8 6-Panel Fiberglass Front and Rear  
Door with Deadbolt Lock  
Heritage Vinyl Insulated Low-E Argon  
Windows with no grids

### Exterior (continued)

Raised Panel Shutters on Front Door Side

### Kitchen

Whirlpool Black Deluxe 30" Gas  
Free Standing Range  
Power Range Hood with Light  
Whirlpool Black 18 Cubic Foot,  
No-Frost Refrigerator w/ Ice maker  
Stainless Steel Double Bowl Sink (33x22x8)  
One USB Receptacle

### Baths

One Piece Fiberglass Tub/Showers  
Garden Tub/Shower-Master Bathroom  
Tub Overflows  
Anti-Scald Valves on Showers & Tubs  
1.6 Gallon Per Flush Elongated Toilets  
China Stool, Tank, and Lid  
China Sinks with Overflows and Pop-Up  
Drains  
Lighted Vent Fan in Each Bath  
Recessed LED Lighting  
Pencil Edge Mirrors

### Cabinetry

Hardwood Stiles  
3/4 Overlay Hardwood Mission Flat  
Panel Cabinet Doors  
Evermore Custom Cabinetry  
Crown Moulding on Overhead Cabinets  
Cabinet Pull Hardware  
30"/42" Staggered Wall Overhead Cabinets  
or 42" Overhead Cabinets

## CUSTOMER CONTACT

Notes:

---

---

---

---

# PRINTABLE INFO SHEET

**Series: Landmark Grand**  
**Model: 2LM2101R Grand 1.0**



## Standards & Features (continued)

### Cabinetry (continued)

- Matching Lined Overhead Cabinets
- Adjustable Shelves in Overhead Cabinets
- Dovetail Drawer Construction
- 75#Drawer Guides
- Base and Center Shelf in Base Cabinets
- WilsonArt Laminate Countertops with Laminate Edging
- 4" WilsonArt Laminate Backsplash
- 36" High Vanities
- Base Shelf in Vanities
- Bump-out Staggered Wall Cabinet over Range
- Refrigerator Surround

### Utilities

- 200 AMP Electrical Service
- Copper Wiring Throughout
- Bryant Gas Furnace w/ Coil
  - Perimeter Heat
  - Furnace Door
  - Fiberglass Heat Ducts
  - Air Return System
- Programmable Thermostat
- 40 Gallon Electric Water Heater with Pan
- Structured Flow Brushed Nickel Faucets
- Main Water Line Shut-Off Valve
- Water Shut-Off Valves - Where Accessible
- Plumb and Wire for Washer
- Wire and Vent for Dryer
- One Exterior Water Faucet
- Recessed Dryer Box (where applicable)

### Insulation

- R-19 Fiberglass Insulation in Walls
- R-38 Avg. Blown Insulation in Ceiling

### Flooring

- SHAW 15 oz. Carpet w/ ShawGuard Carpet Protector
- Rebond Carpet Pad with Tackstrip
- Carpet Installation
- No-Wax Vinyl Floor Coverings
- Entry Foyer Vinyl Flooring

### Bedrooms

- Recessed LED Lighting
- Egress Window in Each Bedroom
- Wire Shelving in Wardrobes
- LED Light in All Walk-In Closets

### Construction

- 2x10 Floor Joists 16" on Center\*\*
- 2x6 Exterior Walls 16" on Center\*\*
- 2x4 Interior Walls
- 40# Roof Load
- 32 wide Floor Stabilize

### Optional Manufactured Home:

- R-11 Floor Insulation, Recessed Frame Design without Perimeter Blocking, 2x6 Floor Joist on 28 Wide Models, 2x8 Floor Joist on 32 Wide Models, 30# Roof Load, & 100 AMP Electrical Service

## CUSTOMER CONTACT

Notes:

---

---

---

---